



**LAHC CAMDEN BOARDING HOUSE  
100% DESIGN DEVELOPMENT PACKAGE  
3-5 KELLOWAY AVENUE, CAMDEN (LOT 17 AND 18, DP 219782)**

Prepared for

**NSW LAND AND HOUSING  
CORPORATION**

MARCH 2023



# Contents

Extent of Work	03
Landscape Plan	04
Fencing Strategy	05
Material Selection	06
Landscape Key Plan and Sections	07
Planting Schedule	08
Typical Landscape Details	09



Australia  
China  
South East Asia

Follow us on



[placedesigngroup.com](http://placedesigngroup.com)

Report title	3-5 Kelloway Avenue Camden NSW 2570
Document number	2520051
Prepared for	Sam Crawford Architects
Authors	Georgia McDonald, Caleb Wright
Revision number	02
Revision issue date	March 2023
Approved	Nick Ison
Reason for revision	Final Issue

Disclaimer: This report has been prepared in accordance with the scope of services described in the contract or agreement between Place Design Group Pty Ltd ACN 082 370063 and the Client. The report relies upon data, surveys, measurements and results taken at or under the particular times and conditions specified herein. Any findings, conclusions or recommendations only apply to the aforementioned circumstances and no greater reliance should be assumed or drawn by the Client. Furthermore, the report has been prepared solely for use by the Client and Place Design Group accepts no responsibility for its use by other parties.



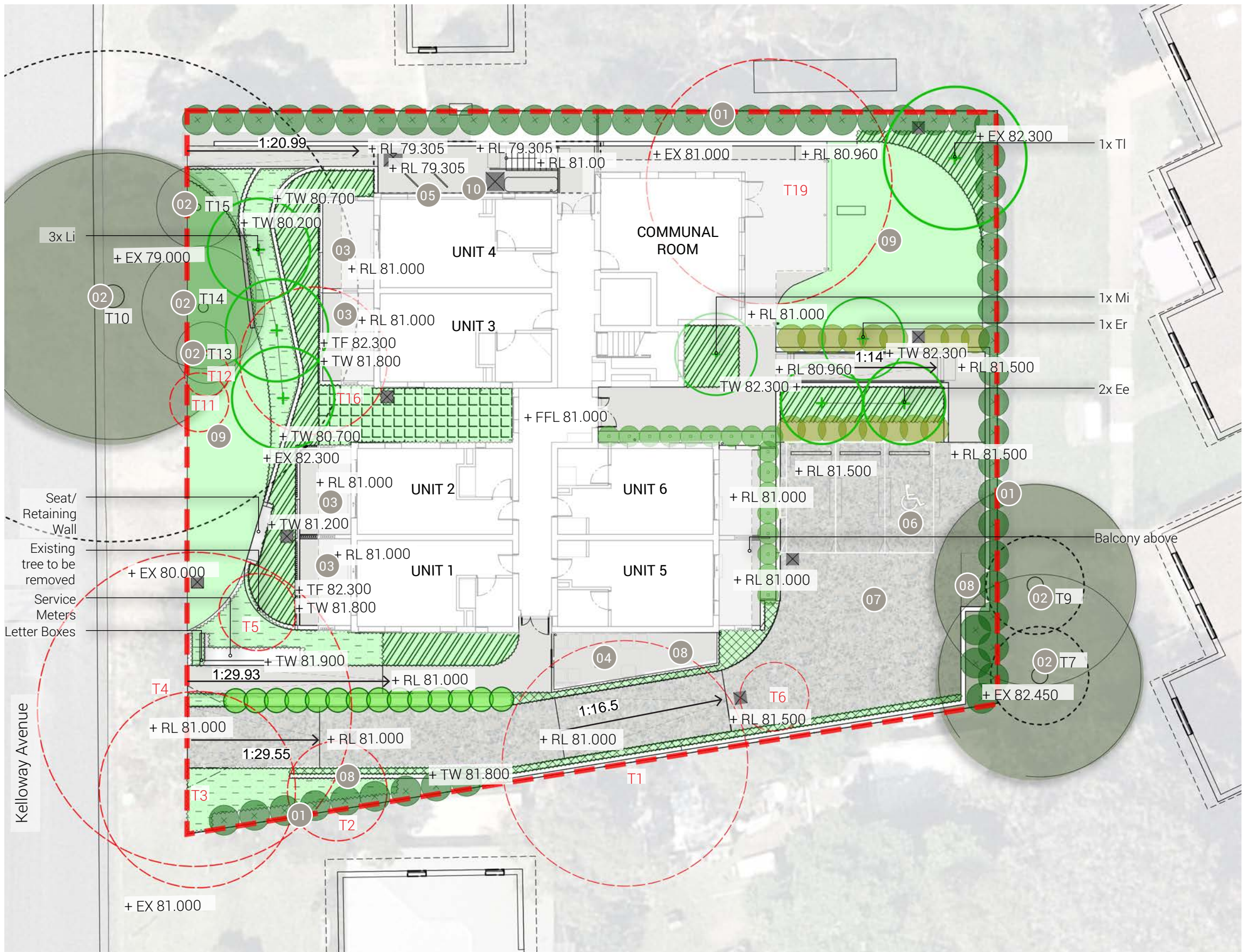
EXTENT OF WORK



 Extent of works



LANDSCAPE PLAN



LEGEND:

- Extent of works
- Mix 1
- Mix 2
- Mix 3
- Liriope muscari 'Just Right'
- Turf area
- Paver
- Driveway pavement
- Stormwater pit
- Existing tree to be retained
- Existing tree to be removed
- Proposed tree
- Syzygium australe
- Melaleuca 'Claret Tops'
- Callistemon viminalis
- Callistemon 'White Anzac'

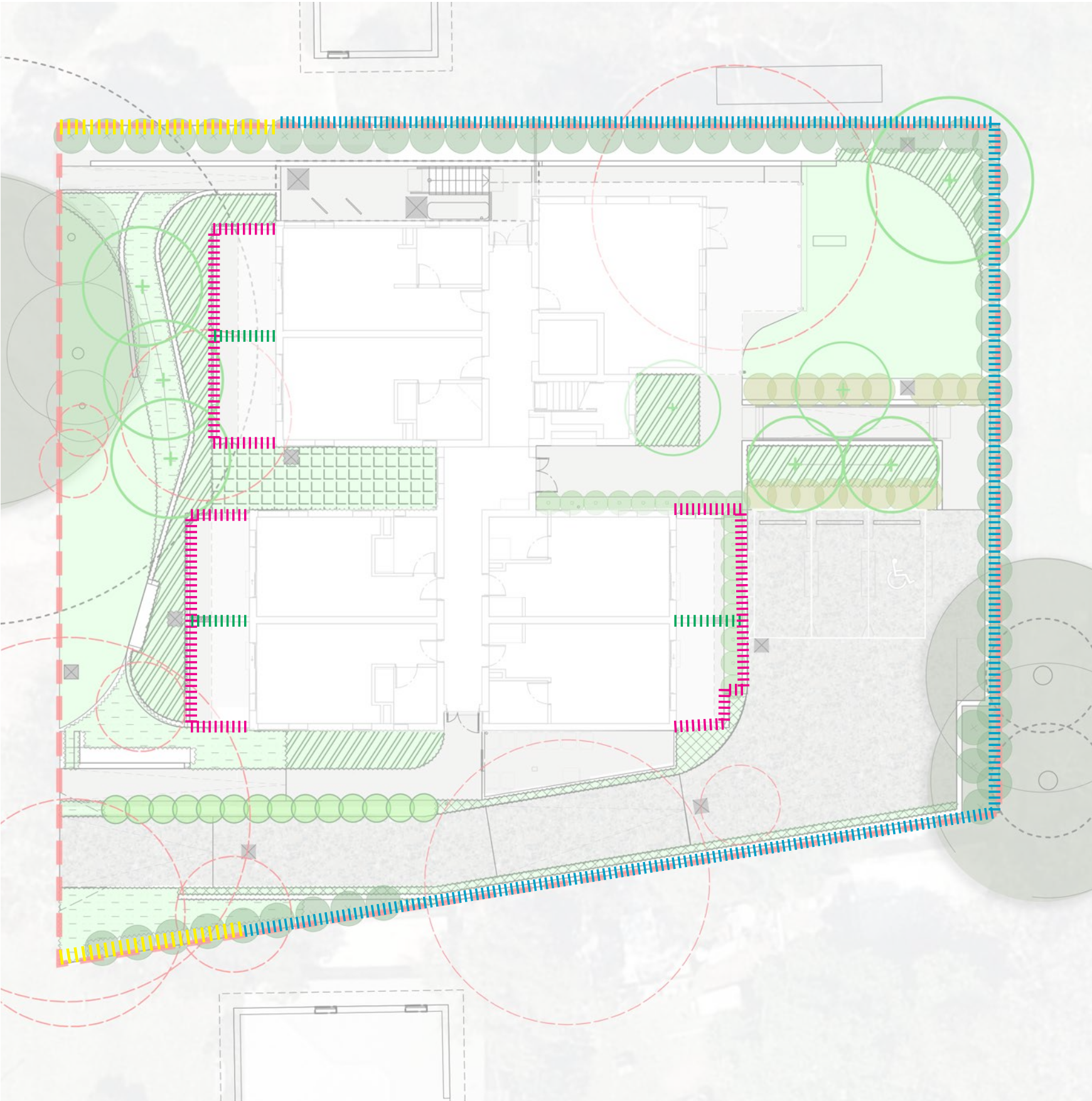
NOTES:

- 01 2m high hedging along site boundary for privacy
- 02 Existing trees to be retained
- 03 Paved private open space
- 04 Bin store location
- 05 Bicycle Parking
- 06 Accessible Parking
- 07 Car Park
- 08 Motorcycle Parking
- 09 Communal Outdoor Area
- 10 OSD Tank Below





Refer to page 8 for tree and planting palette



# FENCING STRATEGY AND MATERIALS SCHEDULE




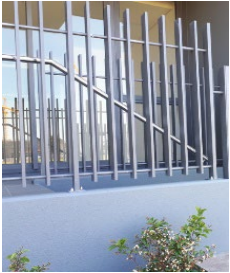


## LEGEND:

-  Fence Type 1: Colorbond fence (1800mm)
-  Fence Type 2: Aluminium palisade fence on wall (500mm)
-  Fence Type 3: Aluminium palisade fence (800mm)
-  Fence Type 4: Aluminium slat fence on wall (500mm)



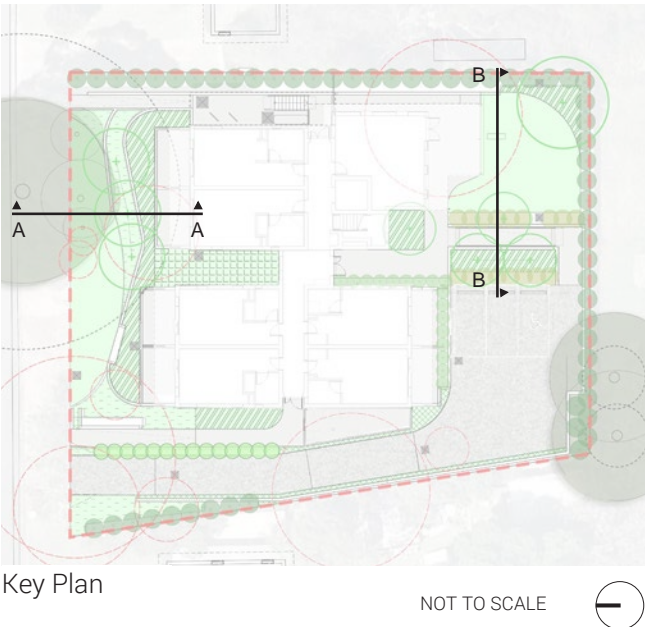
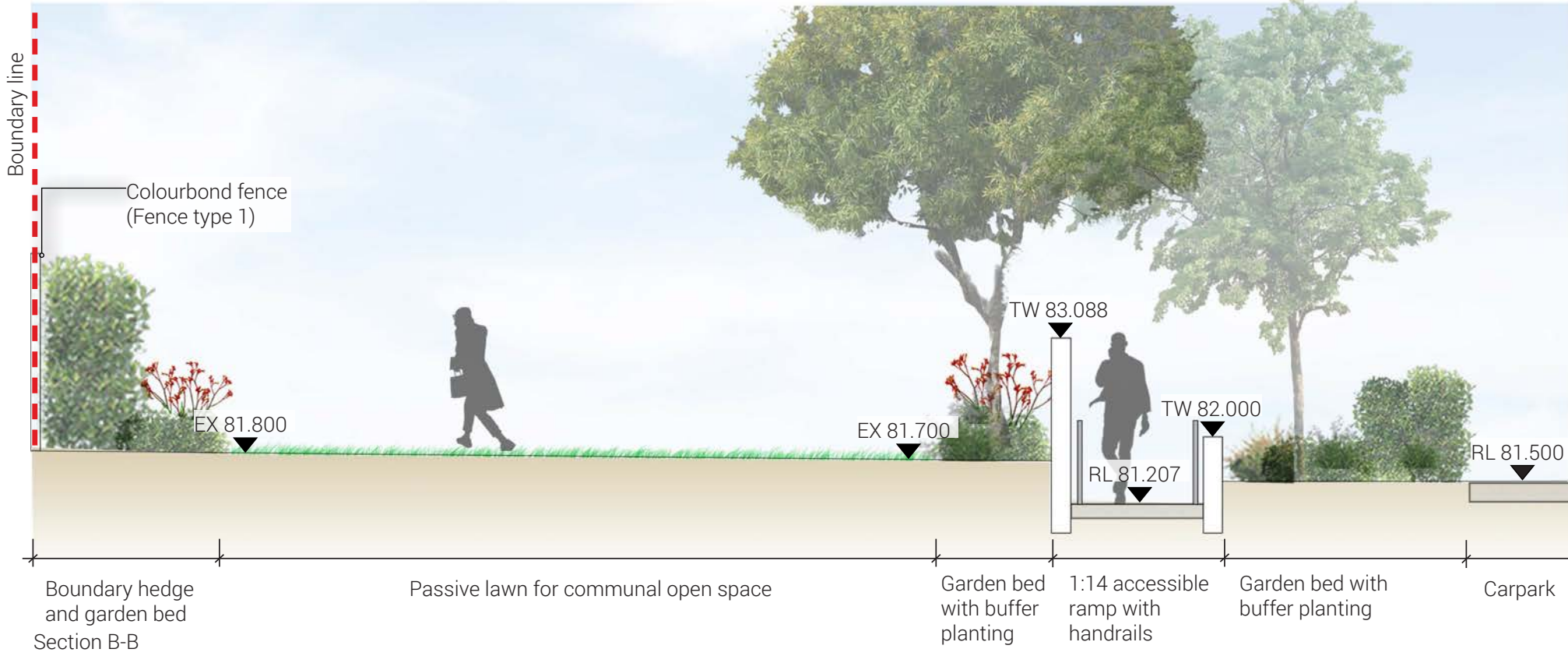
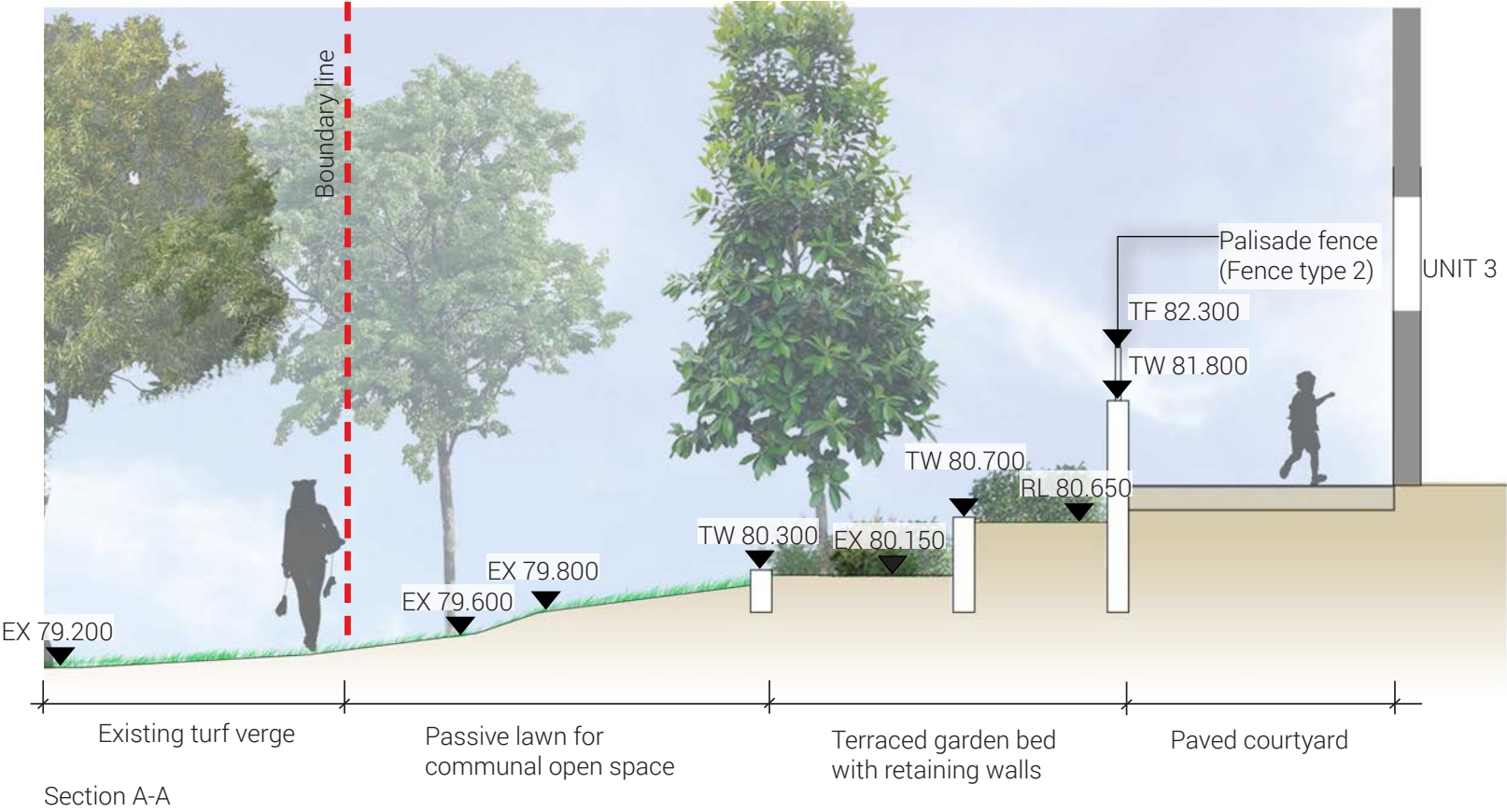


MATERIALS SCHEDULE

LAHC_PETERS AVENUE SELECTION SCHEDULE			
DESCRIPTION	DIMENSIONS	SPECIFICATION	IMAGE
FIXTURES AND FURNITURE			
FENCE TYPE 1	H: 1800mm	Description: Trimclad Colorbond steel fence Panel dimension: 2365mm L X 1800mm H Color: Monument grey Fixing: Refer to manufacture recommendation	
FENCE TYPE 2	H: 500mm	Description: Vertica steel slate fence panel on brick retaining wall Dimension: 500mm high Fixing: Refer to manufacture recommendation Colour: TBC+A9:E12	
FENCE TYPE 3	H: 800mm	Description: Vertica steel slate fence panel Dimension: 800mm high Fixing: Refer to manufacture recommendation Colour: TBC+A9:E12	
FENCE TYPE 4	H: 500mm	Description: Steel slat fence on brick retaining wall Dimension: 500mm H Color: Monument grey Fixing: Refer to manufacture recommendation	



LANDSCAPE KEY PLAN AND SECTIONS



NOT TO SCALE



PLANTING SCHEDULE

LAHC CAMDEN PLANTING SCHEDULE						
SYM	Botanical Name	Common Name	Mature Height	Pot Size	Spacing /m2	Quantity
TREES						
Ee	<i>Elaeocarpus eumundi</i>	Eumundi Quandong	10m	100L	As shown	2
Er	<i>Elaeocarpus reticulatus</i>	Ash Quandong	10m	100L	As shown	1
Li	<i>Lagerstroemia indica x fauriei 'Tuscarora'</i>	Crepe Myrtle	6m	100L	As shown	3
Mi	<i>Malus ioensis 'Plena'</i>	Flowering Crab Apple	5m	100L	As shown	1
Tl	<i>Tristaniopsis laurina 'Luscious'</i>	Water Gum	12m	100L	As shown	1
SHRUBS						
Cv	<i>Callistemon viminalis 'Captain Cook'</i>	Weeping Bottlebrush	1.8m	150mm	As shown	17
Cwa	<i>Callistemon 'White Anzac'</i>	Bottlebrush 'White Anzac'	1m	150mm	As shown	17
Mct	<i>Melaleuca 'Claret Tops'</i>	Honey Myrtle	1m	150mm	As shown	14
Mp	<i>Myoporum parvifolium</i>	Boobialla	0.2m	150mm	1.5/linm	230
Sa	<i>Syzygium australe</i>	Brush Cherry	2m	200mm	As shown	57
Mix 1						
Clj	<i>Callistemon 'Little John'</i>	Bottlebrush 'Little John'	0.8m	150mm	6	71
Gt	<i>Gazania tomentosa</i>	Silver Leaf Gazania	0.2m	150mm	8	47
Lm	<i>Liriope muscari 'Just Right'</i>	Lilyturf	0.5m	150mm	6	71
Ll	<i>Lomandra longifolia 'Tanikia'</i>	Mat Rush	0.6m	150mm	6	71
Od	<i>Ozothamnus diosmifolius 'Coral Flush'</i>	Rice Flower	1m	150mm	6	53
Pbb	<i>Phormium 'Bronze Baby'</i>	Dwarf New Zealand Flax	0.6m	150mm	6	53
Mix 2						
Dc	<i>Dianella caerulea</i>	Blue Flax-lily	1m	150mm	4	91
De	<i>Doryanthes excelsa</i>	GyMEA Lily	2m	200mm	2	24
Lm	<i>Liriope muscari 'Just Right'</i>	Just Right	0.5m	150mm	6	136
Mp	<i>Myoporum parvifolium</i>	Boobialla	0.2m	150mm	8	97
Pp	<i>Pandorea pandorana 'Flat White'</i>	Wonga Wonga Vine	0.3m	150mm	8	97
Mix 3						
Ae	<i>Aspidistra elatior</i>	Cast Iron Plant	1.2m	150mm	4	31
Cm	<i>Clivia miniata</i>	Bush Lily	0.6m	150mm	6	39
Dsf	<i>Dichondra 'Sliver Falls'</i>	Dichondra	0.2m	150mm	8	31
Mp	<i>Viola hederacea</i>	Native Violet	0.2m	150mm	8	21
Px	<i>Philodendron xanadu</i>	Xanadu	1m	150mm	6	31
DRIVEWAY PLANTING						
Lm	<i>Liriope muscari 'Just Right'</i>	Just Right	0.5m	150mm	6	102
TURF						
	<i>Kakadu</i>	Kakadu	N/A	N/A	N/A	N/A

TREES



Elaeocarpus eumundi



Elaeocarpus reticulatus



Tristaniopsis laurina 'Luscious'



Lagerstroemia indica x fauriei 'Tuscarora'



Malus ioensis 'Plena'

Shrubs - Hedging & Screening



Syzygium australe



Melaleuca 'Claret Tops'



Callistemon 'White Anzac'



Callistemon viminalis



Myoporum parvifolium

MIX 1 - Planting to entry



Liriope muscari 'Just Right'



Lomandra 'Tanika'



Ozothamnus diosmifolius 'Coral Flush'



Gazania tomentosa



Phormium 'Bronze Baby'



Callistemon 'Little John'

MIX 2 - Medium and low planting



Liriope muscari 'Just Right'



Pandorea pandorana 'Flat White'



Dianella caerulea



Doryanthes excelsa



Myoporum parvifolium

MIX 3 - Shade Tolerant Planting



Aspidistra elatior



Clivia miniata



Dichondra 'Sliver Falls'



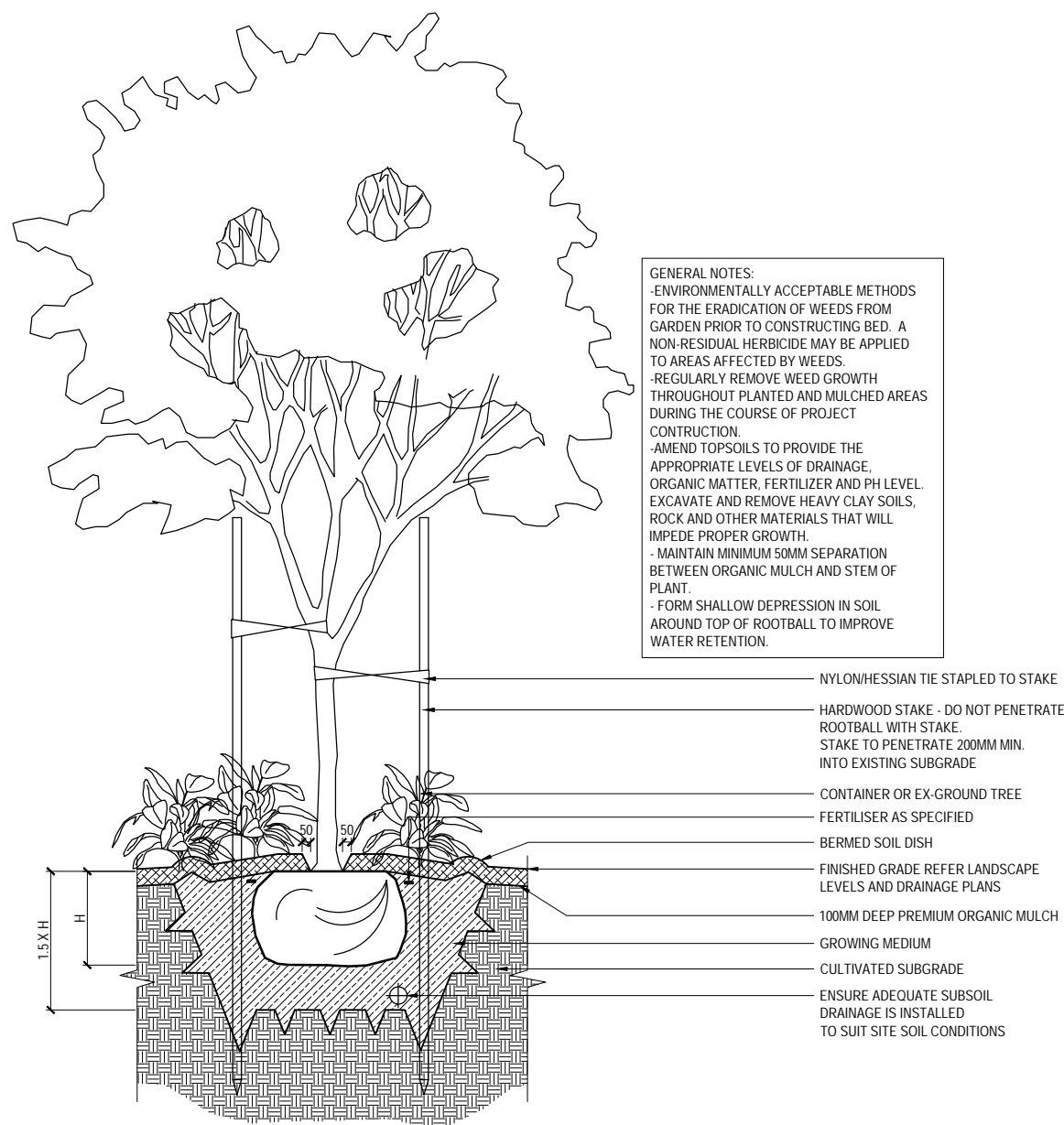
Myoporum parvifolium



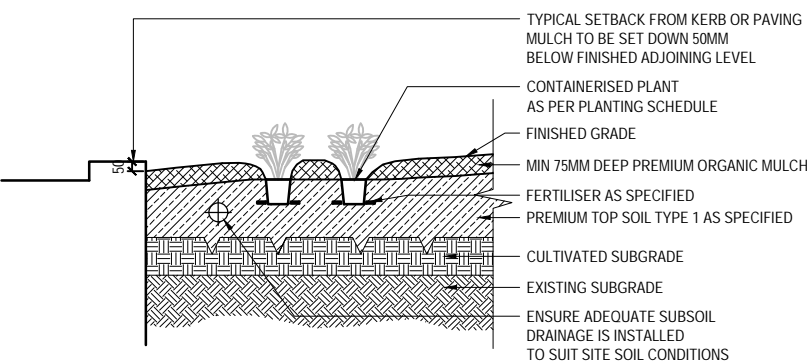
Philodendron xanadu



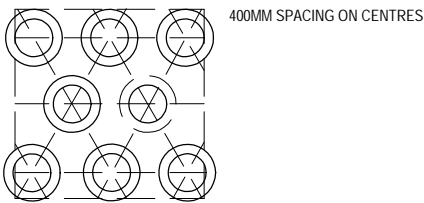
TYPICAL LANDSCAPE DETAILS



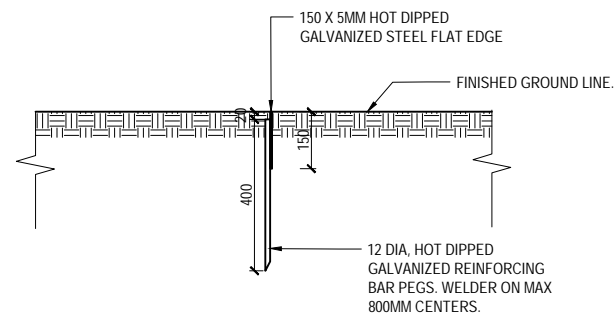
Detail 1: Tree Planting 1:40 @A3



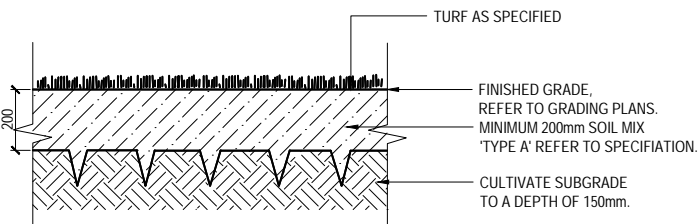
Detail 3: Mass Planting Detail 1:40 @A3



Mass Planting Layout Detail 1:40@A3



Detail 2: Steel Edge Detail 1:20 @A3



Detail 4: Typical Turf Detail 1:20 @A3